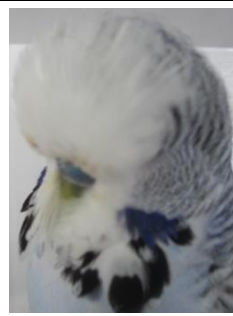


Capricornia Budgerigar Society Inc.



Annual Show.

Saturday, 16th March 2024.

Venue: NORTH ROCKHAMPTON STATE HIGH SCHOOL
Performing Arts Centre,
Simpson Street North Rockhampton.

Judge: TBA

Chief Steward: Ian Schneider

Show Secretary: Kev O'Callaghan

Entries: All entries must be on CBS approved entry
forms (provided)

Exhibitors need to use the class numbers
as per this schedule.

Entry Fee: \$1.00 cents per bird. Max \$10.00 Team of Three
\$1:00 per team

Entries Close: Monday 11th March, at 8 pm.
kevocal@optusnet.com.au ph 0411 956 345 Late
entries will not be accepted.

Benching: To be completed by 8-30 am

Judging: Commences at 8-45 am

All persons responsible for winning exhibits must be present for
checking of rings on completion of judging or exhibits will be
disqualified.

Presentation of Trophies : Approximately 30 minutes after completion of
judging.

Release of birds to follow presentation. The Chief Steward will
advise time.

Food and drinks will be available throughout the day.

Please Note:

- Club show rules must be strictly adhered to.
- Proof of ownership must be produced for all winning exhibits, CBS rings excluded.
- Drinkers must be in show cages.
- Standard seed mix to be used as floor covering in cages.
- Cage stickers to be adhered on the RIGHT hand side of cage.

- It is the Exhibitor's responsibility to ensure all of their birds are nominated in the correct classes and mark cages accordingly.
- All birds entered must be Owner-bred.

CAPRICORNIA BUDGERIGAR SOCIETY INC.BREEDERS SHOW AWARDS LIST

<u>Grand Champion of Show.</u>	Jack Martin Trophy, plus \$25.00
Cash Prize.	
<u>Ch. Opposite Sex of Show.</u>	O'Callaghan Family Trophy.
<u>Ch. Young Bird of Show</u>	Mitton Family Trophy.
<u>Ch. Intermediate Bird of Show</u>	Rod and Val Gardiner Trophy.
<u>Ch. Beginner Bird of Show.</u>	CBS Trophy.
<u>Ch. Nestfeather of Show.</u>	CBS Trophy.
<u>Ch Derby Bird.</u>	Noel Shanahan Memorial Trophy.
<u>Ch Derby Bird- Beginner.</u>	CBS Trophy.
<u>Derby Bird Cock and Hen.</u>	Share the Derby Rings Prizemoney Pool.
<u>CBS Variety Bird.</u>	CBS Trophy.
<u>Best Team of 3, must be all same Sex.</u>	\$10.00 cash prize.

OPEN, INTERMEDIATE, BEGINNER CLASSES each recieve.

Ch. Any Age Cock	\$15.00 cash prize
Ch. Any Age Hen	\$15.00 cash prize
Ch. Young Cock	\$15.00 cash prize
Ch. Young Hen	\$15.00 cash prize
Ch. Nestfeather	\$15.00 cash prize
Ch. Any Age Cock (Reserve)	\$10.00 cash prize
Ch. Any Age Hen (Reserve)	\$10.00 cash prize
Ch. Young Cock (Reserve)	\$10.00 cash prize
Ch. Young Hen (Reserve)	\$10.00 cash prize
Ch. Nestfeather (Reserve)	\$10.00 cash prize

Champion of each of 27 ANBC Variety & AOSV:

\$15.00 cash prize per variety

BUDGERIGAR SCHEDULE for CBS Inc.

SHOWS

VARIETY	ANY AGE COCK	ANY AGE HEN	YOUNG BIRD COCK	YOUNG BIRD HEN	NEST FEATHER
NORMAL GREEN	1	101	201	301	401
NORMAL GREY GREEN	2	102	202	302	402
NORMAL BLUE	3	103	203	303	403
NORMAL VIOLET	4	104	204	304	404
NORMAL GREY	5	105	205	305	405
YELLOW FACED BLUE (Normal Only)	6	106	206	306	406
AUSTRALIAN GOLDEN FACED BLUE (Normal Only)	7	107	207	307	407
BLACK EYED SELF	8	108	208	308	408
DILUTE	9	109	209	309	409
LUTINO	10	110	210	310	410
ALBINO	11	111	211	311	411
DARK EYED CLEAR	12	112	212	312	412
CLEARWING	13	113	213	313	413
GREYWING	14	114	214	314	414
CINNAMONWING	15	115	215	315	415
SPANGLE DOUBLE FACTOR	16	116	216	316	416
OPALINE	17	117	217	317	417
OPALINE A.O.S.V. (Includes Blackeye, Clearwing, Greywing, Cinnamonwing)	18	118	218	318	418
CLEARBODY (includes Opaline)	19	119	219	319	419
LACEWING (includes Opaline)	20	120	220	320	420
Fallow	21	121	221	321	421
SPANGLE (Normal Only, not class 23 combination)	22	122	222	322	422
SPANGLE A.O.S.V. (includes Greywing, Cinnamonwing, Opaline, Fallow)	23	123	223	323	423
DOMINATE PIED (includes Greywing, Cinnamonwing, Opaline, Fallow, Spangle)	24	124	224	324	424
DANISH RECECCIVE PIED (includes Greywing, Cinnamon, Opaline, Fallow, Spangle)	25	125	225	325	425
CRESTED	26	126	226	326	426
AUSTRALIAN WHITE CAP	27	127	227	327	427
A.O.V. / A.O.S.V. (includes Darkwing, Saddleback) Variety must be stated on entry and cage sticker.	28	128	228	328	428

Please Note :- only combinations of sections 8 to 15 is Yellow Faced Blue. See ANBC matrix at

https://anbc.iinet.net.au/uploads/9/8/7/0/9870161/2019_anbc_estandard_2019_master.pdf

for combinations of other sections 16-25

