



CAPRICORNIA BUDGERIGAR

SOCIETY INC.

The Secretary – CBS Inc.
PO Box 5451
CQMC Rockhampton
Queensland 4701

Webpage: www.capbuds.org

1 February 2018

Dear Member,

As a major milestone in our clubs history draws near, it is creating much excitement amongst our members. For those that are unaware our Annual show to be held on the 18th March 2018 is our Golden Anniversary Show. To mark the 50th running of this show all award winners will be presented with a gold commemorative medallion.

We are also privileged to have secured the services of Mr Alan Rowe (ANBC Judge) to officiate at this event. Alan who is an ANBC Hall of Fame recipient is one of the most highly respected judges in this country. Alan has judged overseas on many occasions at World Budgerigar Organisation shows as well as National shows of various countries. This will be Alan's last judging appointment, as he will be retired from judging at the conclusion of our show. So please see fit to give Alan the best possible entry that we can.

Alan will be giving a talk on his experiences in the Budgerigar hobby gained over the years. This will take place in the same hall as the show commencing at 3:00 pm on Saturday the 17th March. Please indicate your intension to attend to the show secretary when placing your show entries so we know numbers for seating requirements and for afternoon tea catering requirements. Also on the evening of the 17th we will be holding a dinner at the Park Avenue Hotel commencing at 6:30 pm. Again please indicate your attendance to the show secretary so that we can pre-book enough tables to seat everyone comfortably. Anyone wanting to attend these functions but not entering the show, you are more than welcome, but please, still indicate your intensions to the show secretary.

In the last newsletter I included the draft schedule for the Annual Show **please note** there has been some changes, the most notable being entries now **close** with the show secretary on **Monday 12th March at 8:00 pm**. These can be either e-mailed (preferable, as eliminates errors) or phoned in. **Late entries will not be accepted**. The final schedule is included in this newsletter.

Also included in this newsletter is an article on feeding for breeding, the 2018 yearly calendar and our auction nomination form. Remember this is a member's newsletter, if you have anything you would like to include send it to me and I will include it. There are some very interesting topics to be presented by various members at our monthly meetings throughout the year, so come along and listen you may pick up some information that could be useful to your breeding / showing program.

Cheers,
Russell Ogden
(Newsletter Editor, CBS Inc.)
ogdenrc@bigpond.com

MEMBERS INFORMATION PAGE

- **Committee Members:** Confirmed at AGM

-

| | | |
|-----------------|-------------------|-------------|
| President: | Ian Schneider | 0408-287709 |
| Vice-President: | John Agnew | 49361762 |
| Treasurer: | Scott Eriksen | 0419-776837 |
| Secretary: | Kevin O'Callaghan | 49261635 |

- EMAIL Addresses: To allow for more efficient distribution of newsletters and other Club information, please forward a test email or your email address to kevocalloptusnet.com.au or ogdenrcbigpond.com ***Thanks to all those who have forwarded these details previously.***
- **SHOW & WIN!!!!!!!** Starting at our 2017 Breeders Show, you will become eligible to win a \$200 Credit at our Annual Auction by showing at the 3 Major Shows (Breeders 2017, Annual 2018, Young Bird Show 2018). You will receive one ticket for showing 1 to 10 birds, 2 tickets for 11 to 20 entries, etc. After the Young Bird Selection Show in 2018, the winner will be drawn. The more you show, the better chance you have to win. It is only open to CBS Inc members. You must show at all 3 shows unless you are judging the show or are genuinely ill or have a family emergency. The aim of this incentive is to encourage members to show consistently at all 3 shows. If you have missed out for this year, you can still be in it next year.
- Services Section: The new Club Shirt is now being worn by many members. If you want to purchase one, contact John Agnew. John will also have a supply of 2018 rings (60 cents each and sold in lots of 25, postage is extra \$5.00) and show cages if anyone needs some.
- Future CBS Variety of the Year are as follows: 2018 Dark Eye Clears
2019 Danish Recessive Pied. These are judged at the Annual Show each year.

FEEDING FOR BREEDING By Dr. Tony Gestier.

There are many components to nutrition but in this lecture we are restricting the discussion to Protein, Fatty Acids and Trace Minerals.

PROTEIN

In Avian Nutrition protein remains the most misunderstood aspect of feeding the bird. We seem to get caught up in the amount of Crude Protein in the diet. Crude Protein (CP) is simply a measure of the nitrogen content of the feed. Multiplied by 6.25. It tells us nothing about the value of the protein to the bird. The CP was introduced to the production animal feed many years ago as some measure of feed quality however it is useless unless combined with the profile of amino acids. Amino acids are the building blocks of protein and they are absorbed from the gut to be recycled into the tissue of the bird. Protein is not absorbed as long chains of protein but is cleaved into small segments (amino acids) and they are absorbed. The amino acids are then sent to the active body cells to be remade into protein or enzymes for use by the animal. So it is the amino acids and their relative proportions which are important to the bird not the amount of nitrogen in the food!

The demand for various amino acids (there are both essential and non essential amino acids) varies with time of year, temperature, breeding status and activity of the bird.

None of us can be expected to understand and know all the requirements for amino acids but we can realise that it is much more involved than just the CP level.

Chick rearing is an important time for proper nutrition. The demands for amino acids in the chick are high - lack of any of the essential amino acids leads to a development problem. It is at this stage that balanced protein is most important and we need to be mindful of providing a good spread of protein sources.

As we all know, protein is found in nearly all foods - what varies is the amount and the amino acid ratio of the protein. Birds in aviaries get most of their protein from vegetable sources. Unfortunately plants and seeds are often low in two critical amino acids - Methionine and Lysine. The cereal grains (including the millets) are recognised as having unbalanced amino acids - that is why purified amino acids are added to processed stock feeds.

The best source of amino acids for animals comes from animals! Animal protein has already been balanced to suit the animal it comes from - so egg, insects and meat protein contain very good amino acid balance. These are sources of protein that are very under used in bird feeding. Please remember that most "egg and biscuit" mixes are biscuit not egg. If your protein supply is chronically unbalanced you will get fat birds. This occurs because the birds eat more than necessary in an attempt to get adequate amino acids for their needs. By eating more they also take in extra carbohydrates and fats which are then stored as body fat. Single seed diets and cereal diets commonly result in fat birds - a direct result of the amino acid imbalance.

The practical way to prevent protein imbalances is to feed the birds a regular supply of animal protein. Boiled egg, cooked chicken meat, chop bones, meal worms, in fact any animal meat is suitable for birds. Common sense must be used in feeding meat to ensure the meat does not spoil while in the aviary. I commonly use good quality meat meal in supplements for birds as it is readily available and has a good amino acid range. To ensure it is safe from bacterial contamination I microwave it so that the temperature in the centre of the container is greater than 71 degrees Celsius.

MINERALS

Minerals are split into two groups - the "macro minerals" such as Calcium, Phosphorous and Magnesium and the "trace minerals" such as Zinc, Copper, Cobalt and Manganese.

Although we all know about the importance of Calcium in bird nutrition it is often not the total answer to problems in egg shells, egg binding and poor bone strength.

Trace minerals are becoming more important to nutrition because the grain growing areas are slowly being depleted of the trace minerals through long term cropping. Unless the trace minerals are replaced as special fertilisers the grains will be trace mineral deficient.

Trace minerals have a vast range of actions in the body - from enzymes to cell walls and from nerve impulses to egg shells.

An important consideration is how effectively these trace minerals are absorbed from the gut of the bird. It is well known that most trace minerals are produced from pulverised rock or chemical processes and they are poorly absorbed from the gut because of the interactions with other compounds in the digestive system. Feeding poorly absorbed minerals is about the same as not feeding them at all.

To improve the absorption, we have chemically bound trace minerals to the amino acids methionine and lysine (the two that are often deficient in plant protein). By linking the trace mineral and the amino acid we stop interactions with the mineral and vastly improve the absorption by the gut. We have researched the product Tracemin Soluble which provides an excellent source of these essential trace minerals in this chemically linked way. Tracemin Soluble is added to the water as per instructions.

FATTY ACIDS

The last topic in bird nutrition for today is Fatty Acids. These are the bits that make up the fats within a food. Just like "oils ain't oils", fats are all different. We have heard about fats being saturated and unsaturated but in this discussion we are considering the actual components of the fat. These are special molecules which all have different properties and different functions in the body.

The ones I am particularly interested in are Linoleic and Linolenic fatty acids. These are of particular importance to birds as they are well recognised as having an effect on egg production and egg quality. Birds which lay multiple eggs in a season are more likely to -need extra fatty acids than those which only lay 2 eggs a season. Budgies, Quarrions, Finches, Neophemas and Quail need good supply of these fatty acids if they are to produce good numbers of good quality eggs over a season. Without a good supply of these fatty acids, the hen cannot produce her best eggs. We start to see reduced egg numbers, reduced egg size and a reduction in hatchability of the eggs. An obvious result of these factors is a drop in number of young on the perch.

Oil seeds are a good source of these fatty acids as is the Vetafarm product Breeding Aid. Breeding Aid is mixed with the seed and allowed 24 hours to penetrate the kernel.

While we are talking about egg shells let's look at the factors that affect egg shell quality.

Factors affecting egg shell Quality: -

- Bird age - eg very young or old birds Egg size - eg very large eggs**
- Environment - eg hot humid conditions Water quality - eg high mineral content Disease - eg uterine infections**
- Electrolytes - lost in disease and stress**

□ **Nutrition Balance** - eg trace mineral balance and fatty acid balance **Antinutritional Factors** - eg mycotoxins and phytates

By looking at this list it is easy to see that many of the factors controlling egg shell quality can be affected by what we do in the management of our birds and the way we feed.

SHOW BIRD NUTRITION

The other special case for careful nutrition is the show bird. Show birds are bred to be the best that is possible. Without good nutrition the birds cannot win on the bench.

A good rule of thumb is to treat these birds like you would a breeding hen. Their requirements are greater than those of a breeding male and it is imperative that they are not deficient in anything that may affect the way they look and the way they show.

My suggestion would be Moulting Aid and Breeding Aid are given to the show birds starting about a month before they come in for training and continuing through the show season.

VIRAL DISEASES OF BUDGERIGARS

Polyoma Virus (previously called Papova Virus).

Polyoma virus is probably the ' most devastating viral disease in Australian Budgies at present. It can completely destroy a seasons breeding.

Polyoma virus is well established 'm Australian birds - Budgies, Quarrions and Peachface are the species most commonly seen with the virus but it has been reported in a wide range of birds including pigeons and finches.

The virus is spread by direct contact with infected birds via dust, faeces, nest boxes, clothing and hands. The virus is quite stable in the environment so will survive outside a bird for some time where it becomes a source of infection for other birds. Generally you introduce this disease by buying it from someone else when you purchase new stock. It is practically impossible to halt the spread of the virus once it is introduced to your aviary. If it is introduced at the beginning of the breeding season you are in for a rough year.

What you see in the birds varies with the age of the bird and the degree of immunity. Older birds are rarely affected - they remain normal but become carriers of the disease to the chicks. Babies are the worst affected with sudden death at about 10 days of age and a high number of "runners" being typical of an outbreak. Birds that die often have full crops and will show blood spots on the skin and an enlarged liver (seen as a large black area just below the point of the keel).

Runners will have no or very -poor tail and flight feathers - otherwise they are bright and active. Some of these will eventually grow out their primaries but others will never have normal flight feathers.

Once an outbreak has started you will need to shut down the breeding for the season. During the shut down the adults will all become infected, they will develop an immunity and next season you should not see the virus.

There is no treatment for the disease and the vaccine that is available overseas is of very questionable efficiency.

Psittacine Beak and Feather Disease (now called Psittacine Circovirus Disease - PCD)

This is Australia's great export to the world. This virus originated in Australia and has been transported around the world with -bird movements. Although it is devastating in larger parrots, in the budgie it is of low importance.

It is thought that PCV virus and possibly the Polyoma virus in combination are responsible for French Moulting in budgies. This is yet to be confirmed but it would explain the unpredictable nature of French Moulting outbreaks.

Carrier birds are well known with PCD virus and they create a situation where it is impossible to totally eradicate the disease because we cannot identify the carriers. Unlike Polyoma virus, PCD

infected birds do not always become immune to the disease - these become the carriers which shed the virus into the environment of other birds.

Mycotoxins

The final topic for this presentation is in the toxins created by moulds and fungi called "Mycotoxins". These are extremely powerful toxins that are made by fungi when they invade foods, especially grains.

There are many different mycotoxins which have many different effects on the body. As time passes we are identifying more of these toxins and beginning to appreciate the effects they cause in a host of different animals. In birds the noted problems are. –

- growth depression of young birds

- increased feed and water consumption - excessively wet droppings - decreased egg production.

Most fungal growth occurs in storage of feed. The dark humid conditions of storage bins encourage the formation of fungi and moulds.. Even if you cannot see moulds in the feed there may be mycotoxins present.

It is important to realise these things are present at some level A the time. However if you encounter a problem in the aviary which you cannot identify with help from your veterinarian you must consider mycotoxins.

Work is being done on ways to eliminate these toxins from the feed and to bind them in the gut before they are absorbed.

Dr. Tony Gestier.

Ave A Larf

A building boom had descended on a little town out west and at the one and only pub at midday a duck waddles into the bar carrying a lunch box and the daily paper tucked under his wing. He gets to the bar and orders a beer. The stunned barman exclaims “you’re a talking duck! And you can hear too replies the duck” The barman asks what the duck is doing there to which the duck replies, “I’m a plumber at the building site up the road and have popped in for lunch”

Every day for the next week it was the same story the duck waddles into the bar, orders a beer, goes to a table eats his lunch and reads the paper while drinking his beer. The following week the travelling circus arrived in town and the ringmaster went around town putting up posters while the circus crew set up the big tent. He wanders into the bar and asked the barman if he could place a poster there. The barman then excitedly told him about this talking duck. The ringmaster then produces a business card telling the barman to give it to the duck when he came in.

Sure enough right on cue the duck waddles in and orders the usual. The barman hands the duck the business card which the duck reads and then thoughtfully asks “You mean the circus with the big pointy topped tent. That’s the one” the barman replies. “The one with all those little caravans” says the duck. “The one and the same” comes the reply. The duck is thoughtful for a while and then exclaims! **“Now why in flaming hell would they want a plumber”**



CAPRICORNIA BUDGERIGAR

SOCIETY INC

The Secretary – CBS Inc.
PO Box 5451
Red Hill Rockhampton
Queensland 4701

Webpage: www.capbuds.org

23 January 2018
To all CBS Members

Dear MEMBER

Following the great success of our 2017 Winter Auction, our Club is again conducting a major Auction on Sunday **June 10**, 2 weeks after the Nationals in Sydney. Birds from top southern breeders and exhibitors as well as from local Zone fanciers will be assembled. It is anticipated that many fanciers from Townsville to the Gold Coast will be attending, as well as several well-known inter-state exhibitors. The venue for this year's auction is again the Performing Arts Centre, North R'ton High School, Simpson Street, North Rockhampton. Off-street parking from Simpson Street is available.

It is with great pleasure that you are invited to submit birds for benching at this event. It is expected that birds offered will be no more than 2 years of age (rung 2016/17/18). A few 2015 rung birds may be entered on application. Members are expected to provide their own show cages and where possible assist in this Club event by providing spare show cages for out of town exhibitors. The CBS Inc. will retain a 10% commission on the selling price, however if a bird sells for less than \$50 then a minimum of \$5.00 will be charged.

As part of our advertising we wish to place the catalogue on our Club web site to generate interest. It would be appreciated if you could **provide details on the attached proforma** and **return this to me by Friday April 06**. This should ensure that the catalogue goes on the web and can be posted to the fanciers in many Queensland Clubs by early May. A photo of a nominated bird or birds would be appreciated and may be included in the catalogue. **Late entries** will go onto a waiting list as the number of lots offered in this auction is capped!

It would be appreciated if you could advise me as soon as possible if you are able to provide **up to SIX birds**. As in previous years, **an extra 2 birds** can be added to this number if you will be attending on the Auction day. If you are unable to supply birds then these will be re-allocated as we are limiting the lots to approx 200 to 240 and the demand for lots in this event is strong. Also if a bird or birds need to be scratched then there is no guarantee that a replacement bird will be accepted. This will be at the discretion of the Committee.

We have also organised a 'Pre-Auction' Meal and 'get-together' on the Saturday evening at the Park Avenue Hotel, Main Street, North Rockhampton. This has been well patronised in previous years. It is an enjoyable function and a great opportunity to have a good feed and a chat to many of the top local and visiting breeders. It's a chance to get some inside information from the breeders of some of the birds being auctioned the next day.

Thank you for your consideration and support. I look forward to your reply and a profitable and successful auction.

Yours fraternally,

Kevin O'Callaghan
Secretary, Capricornia Budgerigar Society Inc.
E-Mail: kevocall@optusnet.com.au Phone: 0749261635

Capricornia Budgerigar Society Inc.
2018 Auction Nomination Form

| SEX | RING NO/ YEAR | VARIETY | COLOUR | COMMENTS eg splits, pedigree, performance,etc | RES \$ |
|--------------------------------------|------------------|---------|--------|--|--------|
| 1. | | | | | |
| 2. | | | | | |
| 3. | | | | | |
| 4. | | | | | |
| 5. | | | | | |
| 6. | | | | | |
| 7. Bonus entry if attending | | | | | |
| 8. Bonus entry if attending | | | | | |

- This nomination is to be returned to CBS Inc by Friday, April 06, 2018.
- Auction date is **Sunday June 10, 2018.**
- If a bird or birds need to be scratched then there is no guarantee that a replacement bird will be accepted. This will be determined by the Committee.
- A bonus of 2 extra birds can be entered if you are attending on the day.

CBS Inc.---Calendar of Events---2018

Note that some Friday Night meetings have been changed to follow a Show or Club event.

| | | | | |
|--|---|---|--------------------|--|
| Sun 14 Jan | ABS Inc Auction | Eagleby, Brisbane | | |
| Tues Jan 16 | Committee Meeting | Schneider residence | 7.15 pm | |
| Feb 02 | General Meeting Judges Meeting to follow. | North Rockhampton High School (NRHS) | 7.15pm | Table Show A/A & Y/B & NF FEATURE : Peter Stengord: "My experiences in breeding budgerigars so far" |
| March 02 | General Meeting | North Rockhampton High School (NRHS) | 7.15pm | Table Show A/A & Y/B & NF FEATURE : "Bring an IDEA." Every member to share an experience or idea that has helped you in this Hobby |
| March 02 | Committee Meeting | Following General meeting | | |
| Monday March 12 | ENTRIES for ANNUAL SHOW due tonight by 8pm | | | Phone Russell Ogden |
| Saturday March 17 | Hall set up: 2:00pm ALAN ROWE LECTURE and Q&A Session from 3pm to about 4:30pm. | NRHS HALL Berserker Street. | | |
| Saturday March 17 | Pre-Show Dinner with Guest Judge Mr Alan Rowe. Venue: Park Avenue Hotel Time: 6:30pm | | | |
| Sunday March 18 | 50th ANNUAL SHOW Judge: ALAN ROWE (ANBC , Victoria) Selling class included. | NRHS HALL Entries Closed Monday 12 March | Benching by 8.45am | A/A & Y/B & NF Judging commences 9:00am |
| Easter: March 30 --02 April 2018 | | | | |
| April 06 | General Meeting | NRHS | 7.15pm | Table Show A/A & Y/B & N/F FEATURE : Rod Gardiner – "My Experiences with Crested Budgerigars: Breeding and exhibiting..." |
| April 7 CBS Inc. ANNUAL AUCTION ENTRIES DUE TODAY!!!!!!! | | | | |
| Late April | Committee Meeting Committee meeting to discuss Zone & ANBC Agenda Items. | Venue: Eriksen residence | 7:15pm | |

| Saturday 21 April Wynnum Auction Confirmed | | | | |
|---|---|---|--|---|
| May General Meeting | May General Meeting to follow YB Show | | | |
| Sat May 05th | CBS INC YOUNG BIRD SELECTION SHOW. May General Meeting to follow this SHOW Draw of CLUB REWARDS for credit of \$200 at CBS Auction | North R'ton High Performing Arts Centre (PAC) Simpson Street. Day of Show entries close at 8:15 am. | Benching by 8.45am | Y/B & NF Judging commences 9:00am CBS Members Raffle drawn. |
| Saturday 19 May | N & C Q Zone: 1. Judges Panel & 2. Delegates Meeting. | TOWNSVILLE | | 3:00 pm Judges Meeting TBC 3:30 pm Zone Delegates Meeting TBC |
| Sunday 20 May | N & C Q ZONE CHAMPIONSHIP SHOW. | TOWNSVILLE | | Benching by 8am Judging starts after benching |
| Friday May 25 Saturday 26 Sunday 27 | ANBC C'SHIP SHOW | Penrith NSW | See ANBC Website for information and details, eg, Venue, times, etc. | |
| Monday May 28 | ANBC Delegates Meeting | Penrith NSW | | |
| NO JUNE MEETING | | | | |
| Sat June 09 | Pre-Auction Dinner | PARK AVENUE HOTEL | 6.30 for 7.00pm | Performing Arts Hall opened from 2-4pm for setup & birds to be dropped off. |
| Sunday June 10 | ANNUAL WINTER AUCTION | Nth R'ton High School Performing Arts Hall. | Bench by 7.45am | View 8.00am Starts at 9:00am |
| Sun June 17 | SQBBA Auction, Brisbane Morayfield Community Centre | | | |
| July 06 | General Meeting Committee Meeting to follow GM | North Rockhampton High School (NRHS) | 7.15pm | <u>Table Show</u> A/A & Y/B & NF <u>FEATURE</u> : Jason Major: Breeding experiences. |
| Sun July 15 | BRASEA Auction, STRATHPINE, Brisbane. | | | |
| July | Henry George Auction has been RESCHEDULED to be held in 2019 | | | |
| August 03 | ANNUAL GENERAL MEETING General & Judges Meetings to follow | North Rockhampton High School (NRHS) | 7.15pm | No <u>Table Show</u> or <u>FEATURE</u> |
| Aug 12 | Newcastle Auction | | | |
| August 25 & 26 | 25th Visit to ??? Aviary TBC Confirmed 26th Attend Pine Rivers Annual Auction | CLUB ANNUAL EVENT | Depart early Saturday morning | |

| | | | | |
|-------------------------|---|--|---|---|
| Sept 07 | General Meeting | NRHS | 7.15pm | Table Show A/A & Y/B & N/F FEATURE : Beginner's Experiences: Nigel West |
| Oct 05 | General Meeting | NRHS | 7.15pm | Table Show A/A & Y/B & N/F FEATURE : Kev O'Callaghan Facial features seen and desired in the modern exhibition budgerigar. |
| Oct 05 | Committee Meeting | Follow General Meeting | | |
| Sat Oct 27 | BREEDERS SHOW BIRD OF YEAR 2018 (Winners from All Shows from November Breeder's Show 2017 to October 2018 Table Show are eligible and will be judged at this Show) Judge: TBA November General Meeting to follow this Show. | North R'ton High Performing Arts Centre (PAC) Simpson Street. Day of Show entries close at 8:15 am | Benching by 8.45am | A/A & Y/B & NF Judging commences 9:00am |
| November Meeting | November General Meeting to be held after Show on October 27 | | | |
| Sunday Nov 25 | CHRISTMAS LAWN SHOW AND CLUB BREAKUP, including final meeting of the year. (December General Meeting). | TBA – | 1.00pm 2.00pm By 2.00pm 3.00pm | BBQ. Meeting. Benching. Judging. |

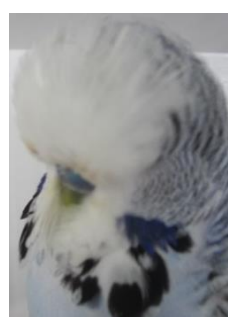
RINGS: 2018 Rings are 60 cents each for coded and un-coded rings, sold in lots of 25. **Postage is extra (\$5.00).** Note that this is the third consecutive year that the Club is not increasing prices despite the increase in cost price.

Contact John Agnew.

CAPRICORNIA BUDGERIGAR SOCIETY INC

50th Annual Show Schedule - 2018.

Note: Entries are due BEFORE the Show date, to ogdenrc@bigpond.com or phone 0437 025793



SUNDAY 18 MARCH

Venue: North Rockhampton High HALL, Berserker Street, North Rockhampton

Judge: Mr Alan ROWE (Victoria, ANBC Judge)

Chief Steward: Ian Schneider

Show Secretary: Russell Ogden ogdenrc@bigpond.com or phone 0437 025793

Entries: All entries must be on CBS approved entry forms (provided) Entries need exhibitors to use the class numbers as per the schedule in this newsletter.

Entry Fee: 50 cents per bird.

Entries Close: **Monday March 12,** 8-00 pm. Late entries will not be accepted.

Benching: by 8-45 am

Judging: 9-00 am

All persons responsible for winning exhibits must be present for checking of rings on completion of judging or exhibits will be disqualified.

Presentation of Trophies: Approximately 30 minutes after completion of judging.

Release of birds to follow presentation. The Chief Steward will advise time.

Please Note:

- Club show rules must be strictly adhered to.
- Proof of ownership must be produced for all winning exhibits, CBS rings excluded.
- Drinkers must be in show cages.
- Cage stickers to be adhered on the RIGHT hand side of cage.
- It is the Exhibitor's responsibility to ensure all of their birds are nominated in the correct classes and mark cages accordingly.
- **All birds entered must be Owner-bred.**

There will be a selling section on the same day. 10% of proceeds to CBS Inc.. Members are requested to bring a plate for Morning Tea.

2018 ANNUAL SHOW AWARD LIST

A special 50 year Medallion presented to all awardees

Grand Champion of Show.

Medallion, Gourley Family
Trophy

Ch. Opposite Sex of Show

Medallion, O'Callaghan Family Trophy

Ch. Young Bird of Show rung 2017

Medallion, Jack Mitton Memorial Y B Trophy

Ch. Nestfeather of Show

Medallion

Ch. Beginner Bird of Show.

Medallion , Stam Family Trophy

Ch. Derby Bird .

Medallion.

Ch. Derby Bird - Beginner

Medallion

Derby Cock and Hen

Share the Derby Rings prize money pool.

CBS Variety Bird

Medallion (Dark Eye Clear, 2017)

Best Team of 3, must be all same Sex.

Medallion

Champion of EACH VARIETY : **Medallion for each variety**

Special award for both Best Lutino and Best Albino, sponsored by John Stam.

OPEN CLASS and BEGINNER CLASS each receive the following:

Champion Any Age Cock

Medallion

Champion Any Age Hen

Medallion

Champion Young Cock

Medallion

Champion Young Hen

Medallion

Champion Nestfeather

Medallion

Reserve Champion Any Age Cock .

Medallion

Reserve Champion Any Age Hen

Medallion

Reserve Champion Young Cock

Medallion

Reserve Champion Young Hen

Medallion

Reserve Champion Nestfeather

Medallion

Budgerigar Schedule for CBS Inc. ANNUAL SHOW 2018

| Variety | Any Age Cock | Any Age Hen | Young Bird Cock | Young Bird Hen | Nest Feather |
|--|-----------------|----------------|--------------------|-------------------|-----------------|
| Normal Green | 1 | 101 | 201 | 301 | 401 |
| Normal Grey Green | 2 | 102 | 202 | 302 | 402 |
| Normal Blue | 3 | 103 | 203 | 303 | 403 |
| Normal Violet <small>Violet Cobalt only</small> | 4 | 104 | 204 | 304 | 404 |
| Normal Grey | 5 | 105 | 205 | 305 | 405 |
| Yellow Faced Blue (Normal only) | 6 | 106 | 206 | 306 | 406 |
| Australian Golden Faced Blue <small>Normal in Double factor</small> | 7 | 107 | 207 | 307 | 407 |
| Black Eyed Self . | 8 | 108 | 208 | 308 | 408 |
| Dilute | 9 | 109 | 209 | 309 | 409 |
| Lutino | 10 | 110 | 210 | 310 | 410 |
| Albino | 11 | 111 | 211 | 311 | 411 |
| Clearwing | 12 | 112 | 212 | 312 | 412 |
| Greywing | 13 | 113 | 213 | 313 | 413 |
| Cinnamonwing | 14 | 114 | 214 | 314 | 414 |
| Spangle Double Factor | 15 | 115 | 215 | 315 | 415 |
| Opaline | 16 | 116 | 216 | 316 | 416 |
| Opaline (AOSV) includes Blackeye, Clearwing, Greywing, Cinnamon | 17 | 117 | 217 | 317 | 417 |
| Clearbody includes Opaline | 18 | 118 | 218 | 318 | 418 |
| Lacewing includes Opaline | 19 | 119 | 219 | 319 | 419 |
| Fallow includes Opaline | 20 | 120 | 220 | 320 | 420 |
| Spangle <small>Normal only, not class 22 combination</small> | 21 | 121 | 221 | 321 | 421 |
| Spangle A.O.S.V <small>(Includes Greywing, Cinnamon, Opaline, Fallow).</small> | 22 | 122 | 222 | 322 | 422 |
| Dominant Pied <small>(Includes Greywing, Cinnamon, Opaline, Fallow, Spangle)</small> | 23 | 123 | 223 | 323 | 423 |
| Danish Recessive Pied (Includes Greywing, Cinnamon, Opaline, Fallow, Spangle) | 24 | 124 | 224 | 324 | 424 |
| Crested | 25 | 125 | 225 | 325 | 425 |
| AOV/AOSV Includes Australian White Cap, Saddleback, Dark Eye Clear | 26 | 126 | 226 | 326 | 426 |

The only combination of sections 8 to 16 is Yellow Faced Blue.

Sections 17 to 26 can have Yellowface as well as other factors.

See ANBC matrix at

<http://www.anbc.iinet.net.au/ANBC%20eStandard%20Final%20October%202013%20master.pdf> for combinations of other sections 17- 26

ENTRY FORM acceptable for CBS Inc Shows

Name: Open ___ or Beginner ___ (tick one)

Entry Fee: \$ _____ **ENTRIES DUE March 12**

ogdenrc@bigpond.com or phone 0437 025793

| <u>Class #</u> | <u>Cage #</u> | <u>Description</u> | <u>Ring Number</u> |
|----------------|---------------|--------------------|--------------------|
| | | | |
| | | | |
| | | | |
| | | | |
| | | | |
| | | | |
| | | | |
| | | | |
| | | | |
| | | | |
| | | | |
| | | | |
| | | | |
| | | | |
| | | | |
| | | | |
| | | | |
| | | | |
| | | | |
| | | | |
| | | | |
| | | | |
| | | | |
| | | | |
| | | | |
| | | | |
| | | | |
| | | | |
| | | | |
| | | | |
| | | | |
| | | | |
| | | | |
| | | | |
| | | | |
| | | | |
| | | | |
| | | | |
| | | | |
| | | | |
| | | | |

Please print a second copy of the completed form for the Show Secretary.

MEMBERSHIP RENEWAL / APPLICATION

2018

Capricornia Budgerigar Society Inc.

Forward to: The Secretary - CBS Inc
 PO Box 5451, RED HILL-
 ROCKHAMPTON QLD 4701



Surname: _____

Christian Names: _____

Address: _____

Email**: _____ ****This is vital to
allow prompt delivery of information to all members.**

Phone Numbers _____ Mobile: _____

I agree to keep my birds in a suitable environment and use appropriate husbandry practices.

My current exhibition status is (Open, Novice, Beginner, etc.)

Applicant's Signature.....

Proposer's Name.....Proposer's Signature.....

Date.....

Please make cheques payable to: " Capricornia Budgerigar Society Inc."

Membership Rates for 2017:

Senior : \$40.00 Partnership : \$40.00 Family: \$40.00

Memberships due by January 01 each year.

CBS Inc WEBPAGE: **www.capbuds.org**