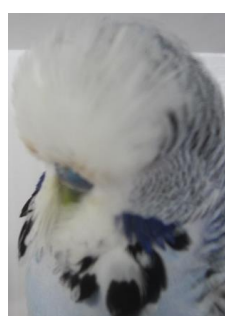
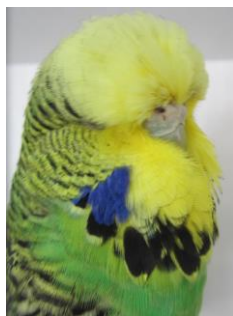


# Capricornia Budgerigar Society Inc.



## 49th Breeders Show.

Saturday, 29<sup>th</sup> October 2016.

**Venue:** NORTH ROCKHAMPTON PAC, Simpson Street, North R'ton.

**Judges:** TBA

**Chief Steward:** Ian Schneider.

**Show Secretary:** Mr Russell Ogden

**Entries:** All entries must be on CBS approved entry forms (provided)  
Entries need exhibitors to use the class numbers as per the schedule in this newsletter.

**Entry Fee:** 50 cents per bird.

**Entries Close:** Day of Show, 8-15 am. Late entries will not be accepted.

**Benching:** by 8-45 am

**Judging:** 9-00 am

**All persons responsible for winning exhibits must be present for checking of rings on completion of judging or exhibits will be disqualified.**

**Presentation of Trophies** : Approximately 30 minutes after completion of judging.

**Release of birds** to follow presentation. The Chief Steward will advise time.

### **Please Note:**

- Club show rules must be strictly adhered to.
- Proof of ownership must be produced for all winning exhibits, CBS rings excluded.
- Drinkers must be in show cages.
- Cage stickers to be adhered on the RIGHT hand side of cage.
- It is the Exhibitor's responsibility to ensure all of their birds are nominated in the correct classes and mark cages accordingly.
- **All birds entered must be Owner-bred.**

## **CAPRICORNIA BUDGERIGAR SOCIETY INC. BREEDERS SHOW AWARDS LIST**

<b><u>Grand Champion of Show.</u></b>	Jack Martin Trophy, plus \$25.00 Cash Prize.
<b><u>Ch. Opposite Sex of Show.</u></b>	O'Callaghan Family Trophy.
<b>Ch. Young Bird of Show</b>	Mitton Family Trophy.
<b><u>Ch. Beginner Bird of Show.</u></b>	CBS Trophy.
<b><u>Ch. Nestfeather of Show.</u></b>	CBS Trophy
<b><u>Best Team of 3, must be all same Sex.</u></b>	\$10.00 cash prize.

### **OPEN CLASS.**

Ch. Any Age Cock	<b>\$15.00 cash prize</b>
Ch. Any Age Hen	<b>\$15.00 cash prize</b>
Ch. Young Cock	<b>\$15.00 cash prize</b>
Ch. Young Hen	<b>\$15.00 cash prize</b>
Ch. Nestfeather	<b>\$15.00 cash prize</b>
Ch. Any Age Cock (Reserve )	<b>\$10.00 cash prize</b>
Ch. Any Age Hen (Reserve)	<b>\$10.00 cash prize</b>
Ch. Young Cock (Reserve)	<b>\$10.00 cash prize</b>
Ch. Young Hen (Reserve)	<b>\$10.00 cash prize</b>
Ch. Nestfeather (Reserve )	<b>\$10.00 cash prize</b>

### **BEGINNER CLASS.**

Ch. Any Age Cock	<b>\$15.00 cash prize</b>
Ch. Any Age Hen	<b>\$15.00 cash prize</b>
Ch. Young Cock	<b>\$15.00 cash prize</b>
Ch. Young Hen	<b>\$15.00 cash prize</b>
Ch. Nestfeather	<b>\$15.00 cash prize</b>
Ch. Any Age Cock (Reserve )	<b>\$10.00 cash prize.</b>
Ch. Any Age Hen (Reserve)	<b>\$10.00 cash prize</b>
Ch. Young Cock (Reserve)	<b>\$10.00 cash prize</b>
Ch. Young Hen (Reserve	<b>\$10.00 cash prize</b>
Ch. Nestfeather (Reserve )	<b>\$10.00 cash prize</b>

**Champion of each of 25 ANBC Variety & AOSV:    \$15.00 cash prize per variety**

## **Budgerigar Schedule for CBS Inc. BREEDERS SHOW 2016**

Variety	Any Age Cock	Any Age Hen	Young Bird Cock	Young Bird Hen	Nest Feather
<b>Normal Green</b>	<b>1</b>	<b>101</b>	<b>201</b>	<b>301</b>	<b>401</b>
<b>Normal Grey Green</b>	<b>2</b>	<b>102</b>	<b>202</b>	<b>302</b>	<b>402</b>
<b>Normal Blue</b>	<b>3</b>	<b>103</b>	<b>203</b>	<b>303</b>	<b>403</b>
<b>Normal Violet</b> Violet Cobalt only	<b>4</b>	<b>104</b>	<b>204</b>	<b>304</b>	<b>404</b>
<b>Normal Grey</b>	<b>5</b>	<b>105</b>	<b>205</b>	<b>305</b>	<b>405</b>
<b>Yellow Faced Blue</b> (Normal only)	<b>6</b>	<b>106</b>	<b>206</b>	<b>306</b>	<b>406</b>
<b>Australian Golden Faced Blue</b> Normal in Double factor	<b>7</b>	<b>107</b>	<b>207</b>	<b>307</b>	<b>407</b>
<b>Black Eyed Self .</b>	<b>8</b>	<b>108</b>	<b>208</b>	<b>308</b>	<b>408</b>
<b>Dilute</b>	<b>9</b>	<b>109</b>	<b>209</b>	<b>309</b>	<b>409</b>
<b>Lutino</b>	<b>10</b>	<b>110</b>	<b>210</b>	<b>310</b>	<b>410</b>
<b>Albino</b>	<b>11</b>	<b>111</b>	<b>211</b>	<b>311</b>	<b>411</b>
<b>Clearwing</b>	<b>12</b>	<b>112</b>	<b>212</b>	<b>312</b>	<b>412</b>
<b>Greywing</b>	<b>13</b>	<b>113</b>	<b>213</b>	<b>313</b>	<b>413</b>
<b>Cinnamonwing</b>	<b>14</b>	<b>114</b>	<b>214</b>	<b>314</b>	<b>414</b>
<b>Spangle Double Factor</b>	<b>15</b>	<b>115</b>	<b>215</b>	<b>315</b>	<b>415</b>
<b>Opaline</b>	<b>16</b>	<b>116</b>	<b>216</b>	<b>316</b>	<b>416</b>
<b>Opaline ( AOSV )</b> includes Blackeye, Clearwing, Greywing, Cinnamon	<b>17</b>	<b>117</b>	<b>217</b>	<b>317</b>	<b>417</b>
<b>Clearbody</b>	<b>18</b>	<b>118</b>	<b>218</b>	<b>318</b>	<b>418</b>
<b>Lacewing</b>	<b>19</b>	<b>119</b>	<b>219</b>	<b>319</b>	<b>419</b>
<b>Fallow</b>	<b>20</b>	<b>120</b>	<b>220</b>	<b>320</b>	<b>420</b>
<b>Spangle</b> Normal only, not class 22 combination	<b>21</b>	<b>121</b>	<b>221</b>	<b>321</b>	<b>421</b>
<b>Spangle A.O.S.V</b> (Includes Greywing, Cinnamon, Opaline, Fallow, Yellowface).	<b>22</b>	<b>122</b>	<b>222</b>	<b>322</b>	<b>422</b>
<b>Dominant Pied</b> (Includes Greywing, Cinnamon, Opaline, Fallow, Yellow Face, Spangle)	<b>23</b>	<b>123</b>	<b>223</b>	<b>323</b>	<b>423</b>
<b>Danish Recessive Pied</b>	<b>24</b>	<b>124</b>	<b>224</b>	<b>324</b>	<b>424</b>
<b>Crested</b>	<b>25</b>	<b>125</b>	<b>225</b>	<b>325</b>	<b>425</b>
<b>AOV/AOSV</b> Includes Aust White Caps, Saddlebacks, Dark Eye Clear	<b>26</b>	<b>126</b>	<b>226</b>	<b>326</b>	<b>426</b>

**Nb** only combination of sections 8 to 15 is Yellow Faced Blue. See ANBC matrix at <http://www.anbc.iinet.net.au/ANBC%20Standard%20Final%20October%202013%20master.pdf> for combinations of other sections 16- 25.

**ENTRY FORM acceptable for CBS Inc Shows**

**Name:** ..... Open \_\_\_ or Beginner \_\_\_ (tick one)

**Entry Fee:** \$ \_\_\_\_\_

<u>Class #</u>	<u>Cage #</u>	<u>Description</u>	<u>Ring Number</u>

**Please print a second copy of the completed form for the Show Secretary.**