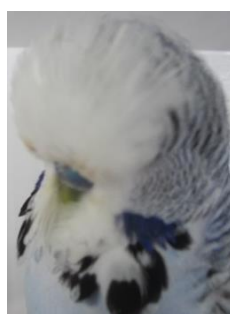


Capricornia Budgerigar Society Inc.

51st Annual Show Schedule - 2019.



SATURDAY 16 MARCH

Venue: North Rockhampton High HALL, B e r s e r k e r Street, North Rockhampton

Judge: Mr Jamie Wright (SQBBA Judge)

Chief Steward: TBA

Show Secretary: Russell Ogden

Entries: All entries must be on CBS approved entry forms (provided)
Entries need exhibitors to use the class numbers as per the schedule in this newsletter.

Entry Fee: 50 cents per bird.

Entries Close: Day of Show, at 8-30 am. Late entries will not be accepted.

Benching: by 9-15 am

Judging: 9-30 am

Show cage floor covering shall be a standard seed mix.

All persons responsible for winning exhibits must be present for checking of rings on completion of judging or exhibits will be disqualified.

Presentation of Trophies: Approximately 30 minutes after completion of judging.

Release of birds to follow presentation. The Chief Steward will advise time.

Please Note:

- Club show rules must be strictly adhered to.
- Proof of ownership must be produced for all winning exhibits, CBS rings excluded.
- Drinkers must be in show cages.
- Cage stickers to be adhered on the RIGHT hand side of cage.
- It is the Exhibitor's responsibility to ensure all of their birds are nominated in the correct classes and mark cages accordingly.
- **All birds entered must be Owner-bred.**

2018 ANNUAL SHOW AWARD LIST

A special 50 year Medallion presented to all awardees

<u>Grand Champion of Show.</u>	GOURLEY Family Trophy plus \$25.00 Trophy
<u>Ch. Opposite Sex of Show</u>	O'Callaghan Family Trophy
<u>Ch. Young Bird of Show rung 2018</u>	Jack Mitton Memorial Y B Trophy
<u>Ch. Beginner Bird of Show.</u>	Stam Family Trophy
<u>Ch. Intermediate bird of show</u>	Trophy
<u>Ch. Derby Bird.</u>	Noel Shanahan Memorial Trophy.
<u>Ch. Derby Bird - Beginner</u>	Special Award donated by John Stam
<u>Derby Cock and Hen</u>	Share the Derby Rings prize money pool.
<u>CBS Variety Bird</u>	Special Award donated by John Stam (Dark Eye Clear, 2017)
<u>Best Team of 3. must be all same Sex.</u>	\$10.00 cash prize.
<u>Champion of EACH VARIETY :</u>	\$15.00 cash prize per variety

OPEN CLASS.

Ch. Any Age Cock	\$15.00 cash prize
Ch. Any Age Hen	\$15.00 cash prize
Ch. Young Cock	\$15.00 cash prize
Ch. Young Hen	\$15.00 cash prize
Ch. Nestfeather	\$15.00 cash prize
Ch. Any Age Cock (Reserve)	\$10.00 cash prize
Ch. Any Age Hen (Reserve)	\$10.00 cash prize
Ch. Young Cock (Reserve)	\$10.00 cash prize
Ch. Young Hen (Reserve)	\$10.00 cash prize
Ch. Nestfeather (Reserve)	\$10.00 cash prize

INTERMEDIATE and BEGINNER CLASS.

Ch. Any Age Cock	\$10.00 cash prize
Ch. Any Age Hen	\$10.00 cash prize
Ch. Young Cock	\$10.00 cash prize
Ch. Young Hen	\$10.00 cash prize
Ch. Nestfeather	\$10.00 cash prize
Ch. Any Age Cock (Reserve)	\$5.00 cash prize.
Ch. Any Age Hen (Reserve)	\$5.00 cash prize
Ch. Young Cock (Reserve)	\$5.00 cash prize
Ch. Young Hen (Reserve	\$5.00 cash prize
Ch. Nestfeather (Reserve)	\$5.00 cash prize

2018 Bird of the Year will be judged at this show. Only birds eligible as of the 2018 Breeders Show are eligible to be judged at this show.

Chrome cage fronts will be accepted at this show

There will be a selling section on the same day. 10% of proceeds to CBS Inc.. Members are requested to bring a plate for Morning Tea.

Budgerigar Schedule for CBS Inc. ANNUAL SHOW 2019

Variety	Any Age Cock	Any Age Hen	Young Bird Cock	Young Bird Hen	Nest Feather
Normal Green	1	101	201	301	401
Normal Grey Green	2	102	202	302	402
Normal Blue	3	103	203	303	403
Normal Violet Violet Cobalt only	4	104	204	304	404
Normal Grey	5	105	205	305	405
Yellow Faced Blue (Normal only)	6	106	206	306	406
Australian Golden Faced Blue (Normal only)	7	107	207	307	407
Black Eyed Self .	8	108	208	308	408
Dilute	9	109	209	309	409
Lutino	10	110	210	310	410
Albino	11	111	211	311	411
Dark Eyed Clear	12	112	212	312	412
Clearwing	13	113	213	313	413
Greywing	14	114	214	314	414
Cinnamonwing	15	115	215	315	415
Spangle Double Factor	16	116	216	316	416
Opaline	17	117	217	317	417
Opaline (AOSV) includes Blackeye, Dilute, Clearwing, Greywing, Cinnamon	18	118	218	318	418
Clearbody	19	119	219	319	419
Lacewing	20	120	220	320	420
Fallow	21	121	221	321	421
Spangle Normal only, not class 22 combination	22	122	222	322	422
Spangle A.O.S.V (Includes Greywing, Cinnamon, Opaline, Fallow).	23	123	223	323	423
Dominant Pied Includes Greywing, Cinnamon, Opaline, Fallow, Yellow Face, Spangle)	24	124	224	324	424
Danish Recessive Pied	25	125	225	325	425
Crested	26	126	226	326	426
AOV/AOSV Includes Aust White Caps, Saddlebacks, Dark Eye Clear	27	127	227	327	427

Nb only combination of sections 8 to 15 is Yellow Faced Blue. See ANBC matrix at
<http://www.anbc.iinet.net.au/ANBC%20Standard%20Final%20October%202013%20master.pdf>
for combinations of other sections 16- 25

